

MULTI CROP DUMP CARTS



CROP CHASER

1000 Series / 2000 Series





CROP CHASER





There are dump carts, and then there is the Amity Crop Chaser series. The 1000 Series single-tank and 2000 Series double-tank models add a whole new level of efficiency, whether you're harvesting silage, grain, or specialty crops. The high capacity, light footprint, integrated scales and track undercarriage offer unmatched logistical benefits in any field condition.



SUPERIOR BENEFITS

When designing the Crop Chaser series, we worked closely with producers and custom operators to incorporate the benefits they need for today's harvest demands. The end result is unlike any other product available.



IMPROVED LOGISTICS

- ❖ Crop Chaser carts add reliability and consistency to harvest operations. By keeping trucks out of the field, crews can run more consistently with fewer weather delays. Furthermore, one cart load equals one truck load in most cases, helping to improve the flow of trucks running to the storage site.

LIGHT FOOTPRINT

- ❖ The standard 36-by-136-inch tracks on the Crop Chaser dump carts reduce compaction by providing a much lighter footprint than trucks or carts with wheels.

INCREASED ROAD SAFETY

- ❖ When trucks are used in the field, they often track mud onto public roads, creating safety and liability issues. Tractors pulling traditional carts cause the same problems when they're used to transport the product back to the farm. Crop Chaser carts keep trucks at the headlands of the field, helping to prevent them from dragging large amounts of mud onto the road.

WET CONDITION PERFORMANCE

- ❖ Thanks to the track undercarriage, Crop Chaser carts can operate in wet conditions when other carts or trucks simply cannot.

CROP CHASER



EXCELLENT UNLOADING CONTROL

❖ The 1000 Series single-tank model includes independent front and rear live wall chains for controlled unloading. It uses four hydraulic remotes for the tank lift cylinders and chains, giving operators maximum control over the dump rate. The 2000 Series features two separate tanks to split the load for natural control and stability when one tank is dumped at a time.

MULTI CROP USES

Crop Chaser dump carts are a highly versatile option to improve the logistics of many harvest operations.

- »» Silage/Forage Crops
- »» Grain
- »» Specialty Crops (beets, sweet corn, edible beans & much more)

FEATURES



HIGH CAPACITY

- ❖ The 1000 Series single tank has a 2,150 cubic-foot struck capacity or 80,000-pound (36,287 kg) weight capacity. The 2000 Series double tank has a 2,060 cubic-foot struck capacity or 66,000-pound (29,937 kg) weight capacity. They were designed so that one cart load equals one truck load.



CAMSO TRACKS

- ❖ Crop Chaser dump carts feature industry-leading Camso tracks, which are rated for speeds up to 20 miles per hour (32 kph). The tracks minimize compaction and are much better suited for use in wet conditions than competitive carts with tires. When fully loaded, the 1000 Series only exerts 16.0 psi, while the 2000 Series exerts 14.5 psi.*

**Assuming a load of 80,000 pounds on the 1000 Series cart and 66,000 pounds on the 2000 Series with 8% load on the hitch.*



CONCENTRATED GREASING LOCATIONS

Grease banks make routine maintenance quick and easy by eliminating the need to grease individual zerks in hard-to-reach locations.



ON-BOARD SCALE

Integrated scales improve logistics by eliminating the need for trucks to run over a scale before dumping. Three sensors (one on each track and one on the hitch) provide a highly accurate weight measurement of each load.



LEFT- OR RIGHT-HAND DUMP

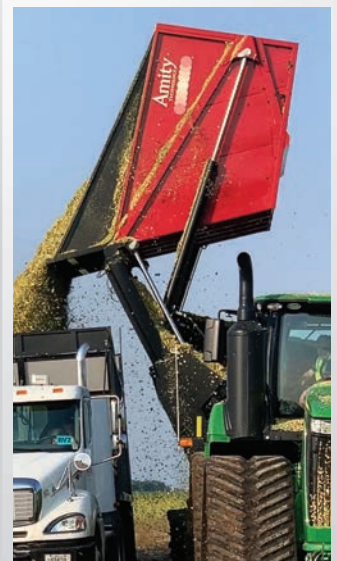
- Customers can order either model with a left- or right-hand dump. The modular design of these carts also allows the dump side to be flipped later in the shop.



PATENTED LIVE WALL CHAINS

(1000 SERIES ONLY)

- The patented live wall chains on the 1000 Series offer superior control while unloading. The front and rear sets of chains are independently operated.



LOAD HOLDING VALVES

Special load holding valves provide added safety by preventing the load from moving in case of an unforeseen hydraulic issue.



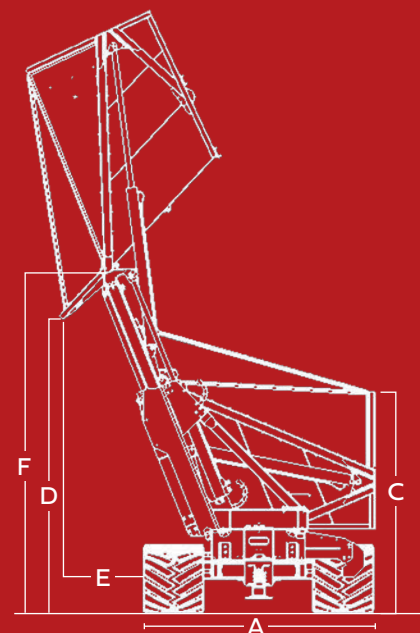
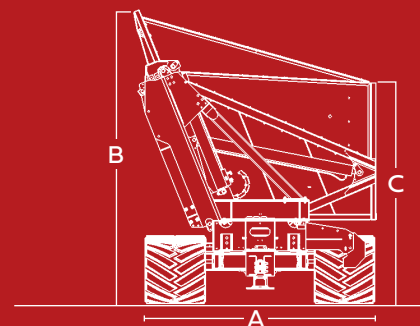
WORK LIGHTS/ CAMERAS

Work lights provide excellent visibility in times of low natural light. Optional camera systems can also be installed for monitoring the loading and unloading processes from the cab.

SPECIFICATIONS:

	1000 Series	2000 Series
Number of Tanks	1	2
Capacity (Struck)	2,150 cu ft (60.9 cu m)	2,060 cu ft (58.3 cu m)
Capacity (Weight)	80,000 lbs (36,287 kg)	66,000 lbs (29,937 kg)
Total Length	33' 6" (10.2 m)	42' (12.8 m)
Total Tank Length	22' 10" (7 m)	32' 9" (10 m)*
A Total Width	14' 6" (4.4 m)	12' (3.7 m)
B Height (High Side)	12' 6" (3.8 m)	14' 6" (4.4 m)
C Height (Low Side)	11' (3.4 m)	10' 11" (3.3 m)
D Max. Dump Lip Height	13' 4" (4.1 m)	14' 6" (4.4 m)
E Max. Dump Lip Clearance	4' (1.2 m)	4' 1" (1.2 m)
Fill Lip Overhang	0" (0 m)	0" (0 m)
F Max. Pivot Height	14' 4" (4.4 m)	16' 5" (5.0 m)
Max. Speed	20 mph (32 kph)	20 mph (32 kph)
Hydraulic Remotes Required	4	4

*Both tanks end to end measurement



2800 7th Avenue N. | Fargo, ND 58102

amitytech.com (701) 232-4199