



# SOIL SAMPLERS ECONOMIC AUTOMATED SAMPLERS

SOIL SAMPLER



## AUTOMATED SOIL SAMPLING

Reduce time in the field with Amity Technology's robust soil sampling units. Auger-style probes provide a consistent sampling depth without lifting the mounted vehicle. There is a wide range of probes and augers available.

### ATV/UTV SOIL SAMPLER 3000 SERIES

ATV-mounted 3012, 3024, and 3036 samplers have a smaller, lighter platform with a specially designed carbide-tipped auger allowing sampling of all soil types – including frozen ground. The extremely fast cycle time of 10-22 seconds lets you collect more samples in less time and can collect up to 20 samples at a time. The 3036 is ideal for carbon sampling.

### IN-CAB SOIL SAMPLER 2400

Sampling from the comfort of the pickup cab, especially during the fall, is important. The in-cab soil sampler has 6,000 lbs. of down force and has a 1.75-inch and 30-inch stroke. The unparalleled convenience with high-quality cores and fast cycle times of Amity Technology's In-cab Soil Sampler make it a great choice.

### PICKUP-MOUNTED SOIL SAMPLER 2450

Automatically collect up to 25 cores with the pickup-mounted soil sampler with push button controls from Amity Technology. The remote has a 10-foot cord so you don't need to get out of the cab for samples. The stainless steel sampling parts, 3,500 lbs. of down force, and sample depths of 0 to 24 inches make this sampler a workhorse during sampling season.

### 3-POINT HITCH-MOUNTED SOIL SAMPLER 4804

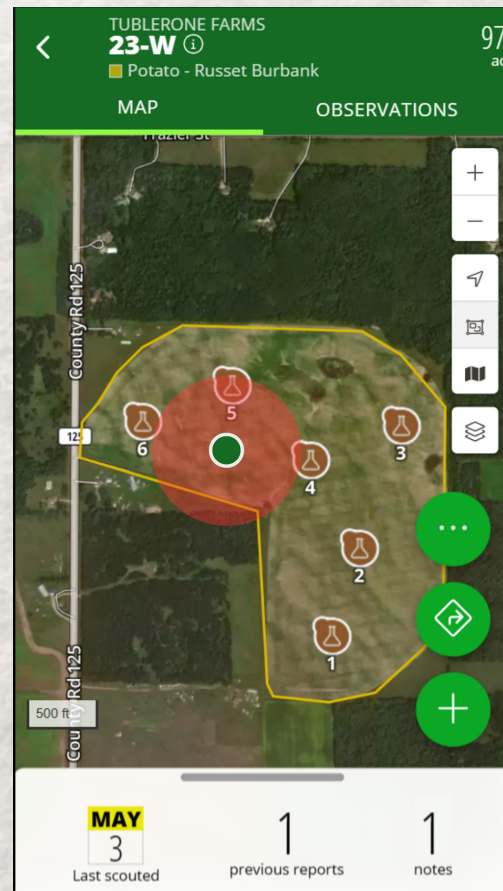
When deeper samples are needed, the 3-point hitch-mounted hydraulic soil sampler is the answer. The sampler can be mounted onto any Cat. I or II 3-point hitch and uses the tractor's hydraulics for operation. With sample depths of 0 to 48 inches and a cycle time of 12-20 seconds, this is a great option to collect your cores. Also a great tool for research projects.

**farmQA**  
SCOUT / ADVISE / ANALYZE

With FarmQA you can:

- 1) **Identify and track sampling points:** Upload data sets as KML/KMZ, GeoTiff or Shape Files; create or import zones and grids; or use a composite sampling method.
- 2) **Define locations:** Locate the field by map or list, navigate to the sampling location, and drop sampling pins.
- 3) **Manage tasks, teams, and workflow:** If you're covering a lot of ground, you can maximize route and dispatch efficiency and monitor progress via a color-coded map.
- 4) **Geo tag for reliable results:** With FarmQA, you gain repeatability, sampling same spots across seasons. Collect samples and use a barcode scanner to associate the sample with the location. Lab test results will be associated with that point when imported to your FarmQA account.
- 5) **Import and analyze results:** Import your lab test results and compare data across fields, crops, and growing seasons using FarmQA analytics.

[FarmQA.com/solutions/soilsampling](https://farmqa.com/solutions/soilsampling)



## FIELD-PROVEN SOLUTIONS™

Field-proven solutions from Amity Technology are grower-focused and grower-driven. We listen to growers, look for ways to make harvest more efficient, and engineer solutions for your farming operation.



## SOIL SAMPLER SPECIFICATIONS

<b>ATV/UTV Soil Sampler 3000 Series</b>	<ul style="list-style-type: none"> <li>• Automated collection of up to 20 samples</li> <li>• 1 x 12", 3/4 x 24", and 3/4 x 36" bore x stroke auger</li> <li>• Specially designed carbide tipped auger</li> <li>• Low profile</li> <li>• Push button controls with cord</li> <li>• All types of soil</li> </ul>	<ul style="list-style-type: none"> <li>• 0-24" sample depth</li> <li>• 2 hydraulic motors</li> <li>• 6.5 hp Honda hydraulic power pack</li> <li>• 10-22 sec. cycle time</li> <li>• 210 lbs.</li> <li>• 12, 24, and 36" sample depth</li> </ul>
<b>In-cab Soil Sampler 2400</b>	<ul style="list-style-type: none"> <li>• Direct push soil sampler</li> <li>• Manual collection</li> <li>• Quick attach probe</li> <li>• Electric over hydraulic power unit</li> <li>• Push button controls with cord</li> <li>• Dry tip and wet tip options</li> <li>• Samples in frozen ground up to 24"</li> </ul>	<ul style="list-style-type: none"> <li>• 0-24" sample depth</li> <li>• 6,000 lbs. down force</li> <li>• 1 3/4" bore x 30" stroke cylinder</li> <li>• 11-17 sec. cycle time</li> <li>• 210 lbs.</li> </ul>
<b>Pickup-mounted Soil Sampler 2450</b>	<ul style="list-style-type: none"> <li>• Automated collection of up to 25 samples</li> <li>• Easily adjusts to sampling position</li> <li>• Electric over hydraulic power unit</li> <li>• Push button remote control with cord</li> <li>• Adjustable height variations for pickup models</li> <li>• Stainless steel sampling parts</li> </ul>	<ul style="list-style-type: none"> <li>• 0-24" sample depth</li> <li>• 3,500 lbs. down force</li> <li>• 1 1/2" bore x 30" stroke cylinder</li> <li>• 10-12 sec. cycle time</li> <li>• 225 lbs.</li> </ul>
<b>3-point Hitch-mounted Soil Sampler 4840</b>	<ul style="list-style-type: none"> <li>• Mounted on any Cat. I or II hitch</li> <li>• Fast cycle time</li> <li>• Sample depth of 0-48"</li> <li>• Utilizes the hydraulics from the tractor</li> </ul>	<ul style="list-style-type: none"> <li>• 0-48" sample depth</li> <li>• 0 hydraulic motors</li> <li>• 12-20 sec. cycle time</li> <li>• 185 lbs.</li> </ul>

# SOIL SAMPLER

**Amity**  
TECHNOLOGY

amitytech.com

2800 7th Avenue North  
 Fargo, ND 58102 USA  
 Phone: (701) 232-4199  
 Fax: (701) 234-1716